

Standardized Protocol

Confirmation that a Building is Occupied by a Bat Colony

Abbreviated Procedure

To check whether there is a bat colony in a building, look for signs such as noise (scratching or bat cries) and feces, called guano (similar to mouse feces, but longer, tapered, and segmented) (Figure 1).

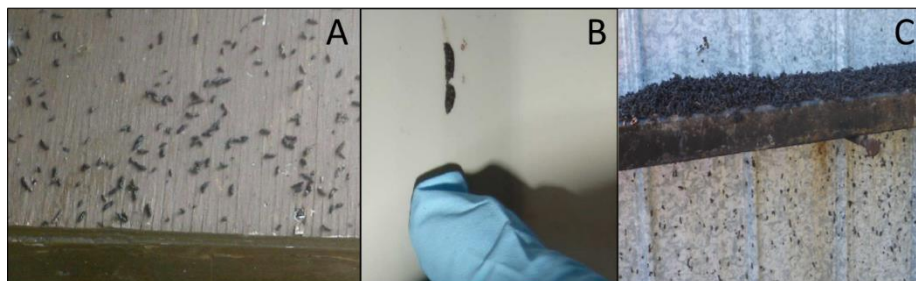


Figure 1. A) Guano on the wall at the entrance to a colony B) What bat guano looks like C) Build-up of guano

However, the best way to confirm the presence of bats is to watch them emerge at dusk. To do that, you first have to locate where they're coming in and out. These openings are most often at the edges of the walls and roof, in dormer windows, or above window frames. Here's the best way to find them:

1. Openings can be identified by examining the site during the day. Often, the presence of feces on the walls will indicate an entrance.
2. If it is difficult to locate entrances (this is often the case), it's a good idea to spend an evening locating them prior to the count. The best conditions for observing bats are warm temperatures (15°C–30°C) with no wind or precipitation.
3. Place observers at each corner of the building if possible, each watching one side, so as to cover the entire area (Figure 2A). Use a flashlight or headlamp and avoid shining the light directly at the entrance. Keep silent.
4. If there are not enough participants or the building is too big or variable in shape, place people at opposite corners of the building or all around the perimeter so that they can monitor the entire building area (Figure 2B).

Standardized Protocol Confirmation that a Building is Occupied by a Bat Colony

Abbreviated Procedure (cont.)

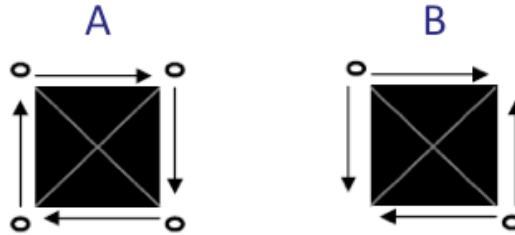


Figure 2. A) Position of observers with four people B) Position of observers with two people

5. Once an opening is discovered, focus on another area. A single person can cover the entire building, but the observation process will take a little longer. Proceed systematically by observing one side or one portion at a time.
6. Record the information on the form and draw a diagram.