



Bat Colony Validation Protocol

There is a few ways to verify the presence of a bat maternity colony. Sometimes it will be possible to hear scratching noise and vocalizations from the bats in the colony. However, the best way to confirm the presence of a maternity colony is to observe them leaving the colony after sunset. To do this, you must first locate the openings where the bats enter and exit the colony. These openings are most often found just below the roof, in dormer windows or above window frames. Here is the best way to pinpoint them:

1. You can often detect an opening by the presence of guano on the walls found below the opening.
2. In many cases, it will be difficult to find openings by the presence of guano. In this case, openings can be located by observing the building for emerging bats after sunset. The best time to observe bats is on warm nights, without wind or rain.
3. Ideally, place one person at each corner of the building, so that all sides of the building can be watched (see figure 1). Observers should be equipped with a flashlight or headlamp.
4. If you do not have enough participants, spread people around the building so that all sides of the building can be observed (see figure 2).
5. If you are alone, use a systematic approach by observing one section at a time. Once you have located an opening, you can focus your efforts on another section.

Figure 1

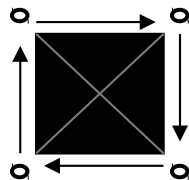


Figure 2

